

Component Replacement

- electrical -



Xperia™ C3 Dual
S55t, S55u, D2502

Xperia™ C3
D2533

CONTENTS

1 Replaceable Components 3

2 Component Placing..... 5

3 Additional Repair info 6

4 Revision History 11

For general information about electrical repair related issues, refer to 1220-1336: Generic Repair Manual - electrical

Test after electrical replacement: refer to 1273-1772 Mechanical Test Instruction

Do not remove shield can lids (Heat pasta are added and RF performance will be damaged)

1 Replaceable Components

EXPLANATION OF ABBREVIATIONS USED IN THE COLUMN 'COMMENTS' BELOW

COMPONENT LOCATION

P = Primary side

S = Secondary side

REPAIR METHOD

HA = Hot Air (removal & mounting)

ST = Soldering Tool (removal & mounting)

HA/ST = Hot Air for removal - Soldering Tool for mounting

BGA = BGA Station

BH = Bottom Heater

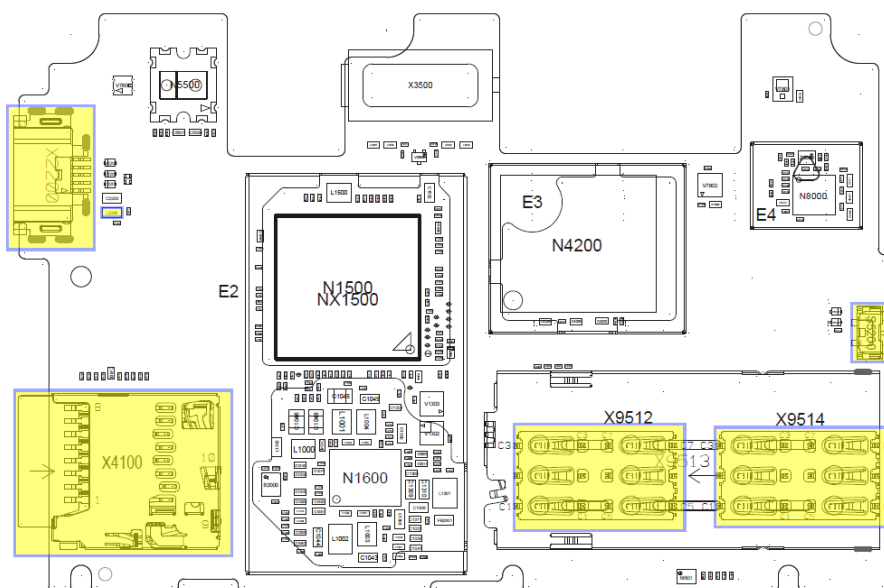
ADDITIONAL INFORMATION

⇒1 (2,3,4, etc.) = Proceed to 'Additional Repair Info' for further instructions in the indicated section(s).

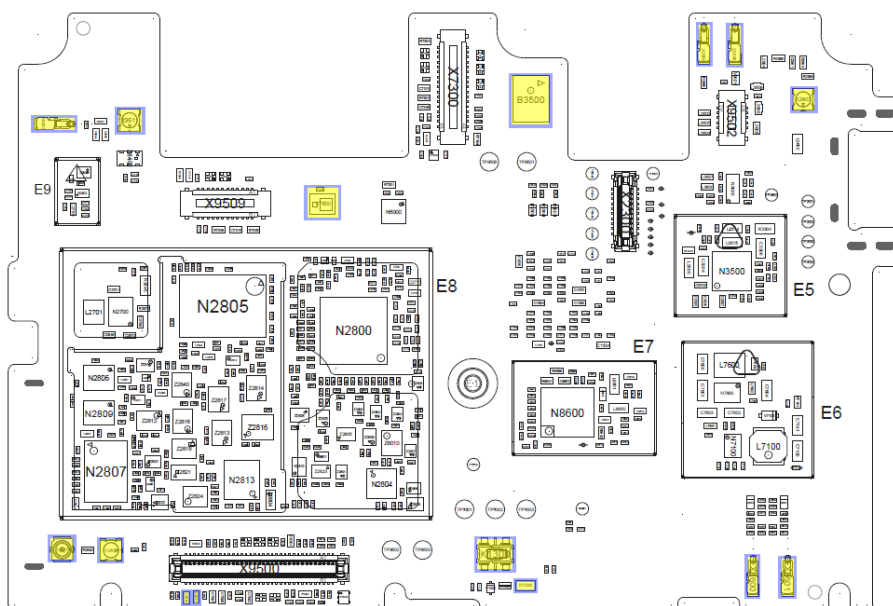
Position	Component	Part no.	Comments
B3500	Mic 3.76 Silicon SGP5	1276-0991	S HA+BH ⇒1
L2200	Filter 220ohm 0603 2A 0.05ohm Bead	1001-1896	P HA+BH ⇒2
L3610	Ferrite B 0.0 Ohm 0.0 A 600ohm 0402 0.3A 0.7oh	1000-0132	S HA+BH ⇒3
L3611	Ferrite B 0.0 Ohm 0.0 A 600ohm 0402 0.3A 0.7oh	1000-0132	S HA+BH ⇒3
R1306	Resistor 0.01 Ohm +/-1% 200.0 mW (1.6x0.	1238-2147	S HA+BH ⇒4
S5200	Input Switch Side Push/vol and on/off sw	1252-4327	P HA+BH ⇒5
V7800	LED flash LED 2.03mmx1.63mmx0.70mm	1277-7270	S HA+BH ⇒6
X1300	Conn BtB Plug 4p HIROSE/BM22	1281-9973	S HA+BH ⇒7
X2200	Conn USB B Receptacle 5p	1268-3388	P HA+BH or BGA ⇒8
X2802	Conn Coax Receptacle 1p	1237-5326	S HA+BH ⇒9
X2803	Conn Coax Receptacle 1p	1237-5326	S HA+BH ⇒10
X2805	Conn Leaf Spring Plug 1p Antenna/GND Spr	1239-2123	S HA+BH ⇒11
X2806	Conn Leaf Spring Plug 1p Antenna/GND Spr	1239-2123	S HA+BH ⇒11
X2807	Conn Coax Receptacle 1p	1261-3585	S HA+BH ⇒12
X4100	Card Conn Micro SD	1256-8507	P HA+BH or BGA ⇒13
X8003	Conn Leaf Spring Plug 1p Antenna/GND Spr	1239-2123	S HA+BH ⇒14
X8600	Conn Leaf Spring Plug 1p Antenna/GND Spr	1239-2123	S HA+BH ⇒15
X8601	Conn Leaf Spring Plug 1p Antenna/GND Spr	1239-2123	S HA+BH ⇒15
X9511	Conn Coax Receptacle 1p	1237-5326	S HA+BH ⇒16
X9512	Card Conn SIM Dual uSIM reader (block)	1283-9287	P HA+BH ⇒17
X9513	Card Conn SIM Dual uSIM reader (Shieldin	1281-8718	P HA+BH ⇒17
X9514	Card Conn SIM Dual uSIM reader (block)	1283-9287	P HA+BH ⇒17

2 Component Placing

To access the Component Placing document, double-click the icon below.
Applicable for on-screen viewing only – icon not shown on hard-copies.



Primary side



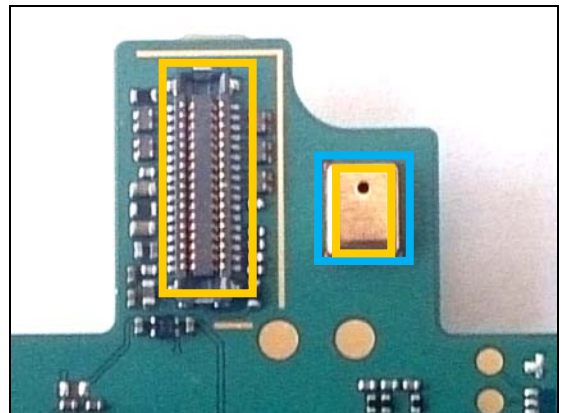
Secondary side

3 Additional Repair info

1

B3500

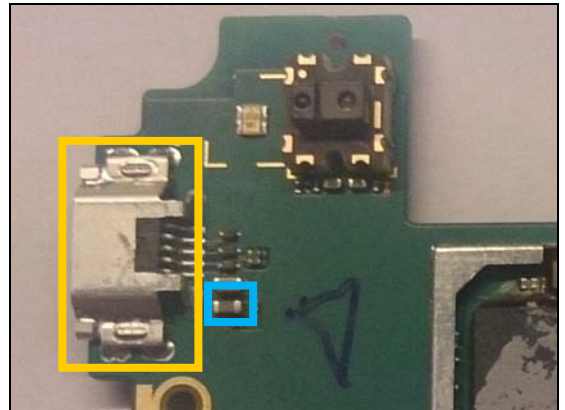
Replace if no audio from secondary mic
Protect the BtB connectors with capton tape!
When replacing protect secondary mic with capton tape!



2

L2200

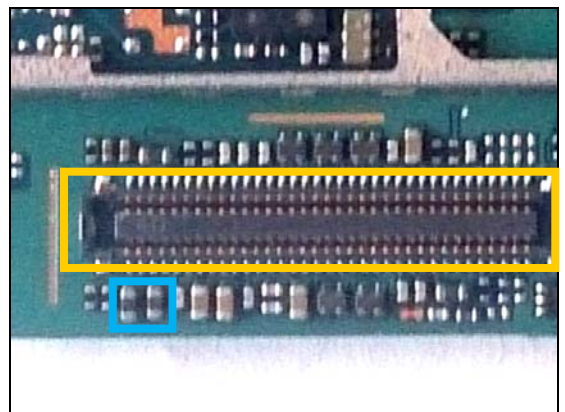
Replace if open circuit (USB charger or data transfer not working)
Protect the USB connector with capton tape!



3

L3610, L3611

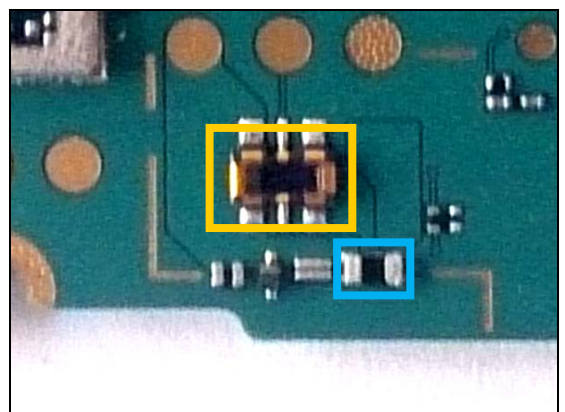
Replace if open circuit (Vibrator not working)
Protect the BtB connector with capton tape!



4

R1306

Replace if open circuit (Phone dead)
Protect the BtB connector with capton tape!



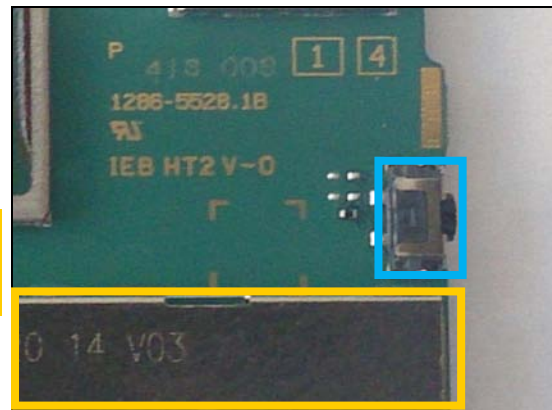
Repair Actions: Additional Repair Info

5

S5200

Replace if open circuit 1-2 when pushed (Reset not working)

Protect the SIM connectors with capton tape!

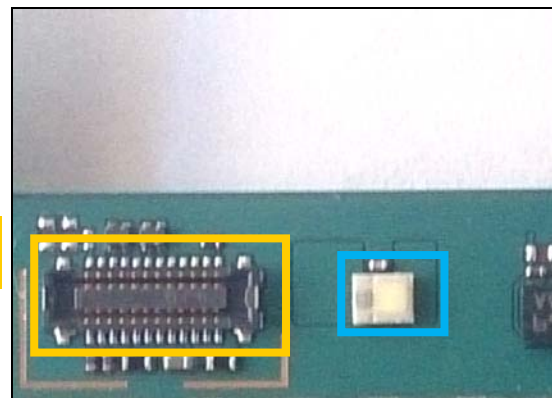


6

V7800

Replace if Flash LED not working

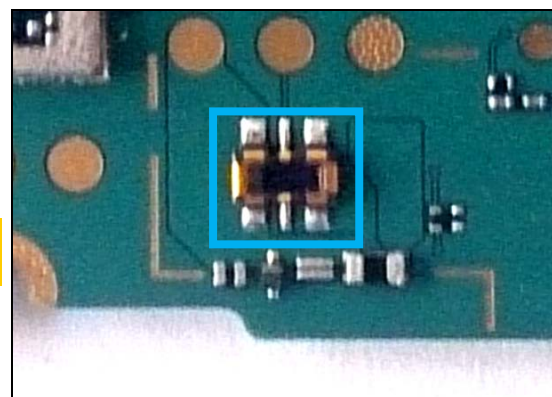
Protect the BtB connector with capton tape!



7

X1300

Replace if mechanical damaged. (Phone dead or power off)

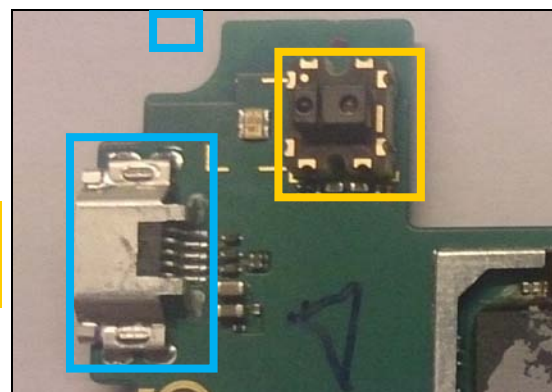


8

X2200

Replace if mechanical damaged (USB charger or data transfer not working)

Protect the sensor with capton tape!



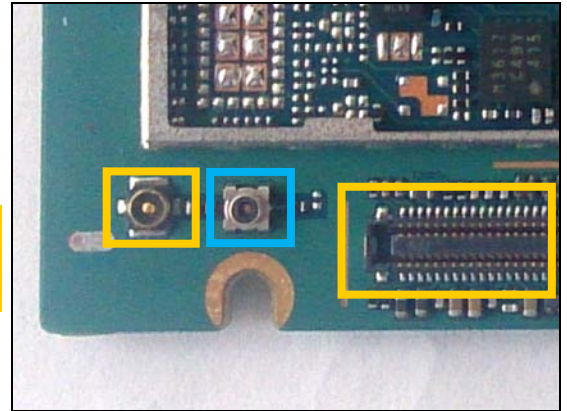
Repair Actions: Additional Repair Info

9

X2802

Replace if open circuit 1-2 (No or bad network, main antenna)

Protect the RF and BtB connectors with capton tape!

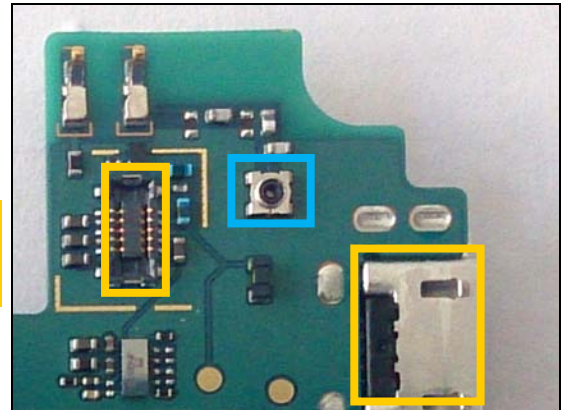


10

X2803

Replace if open circuit 1-2 (Bad network, diversity antenna)

Protect the USB and BtB connectors with capton tape!

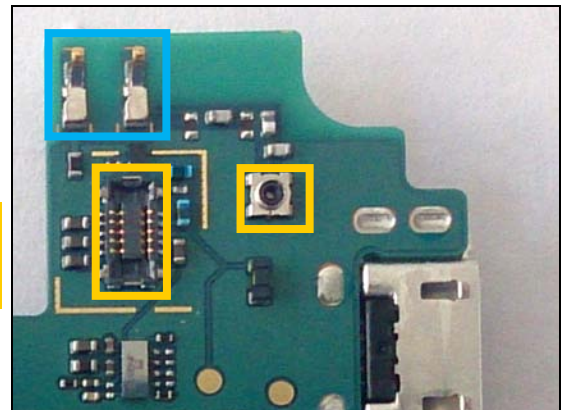


11

X2805, X2806

Replace if mechanical damaged (Bad network, diversity antenna)

Protect the RF and BtB connectors with capton tape!

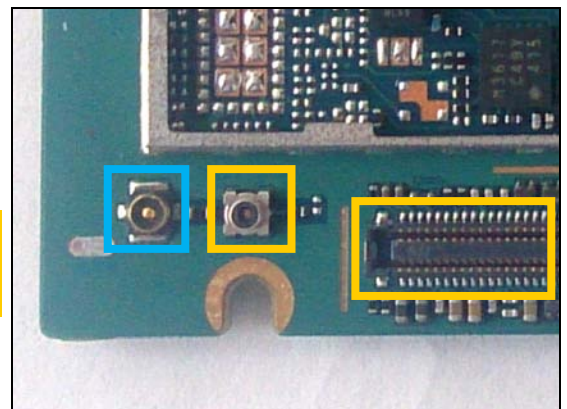


12

X2807

Replace if mechanical damaged (No or bad network, main antenna)

Protect the RF and BtB connectors with capton tape!

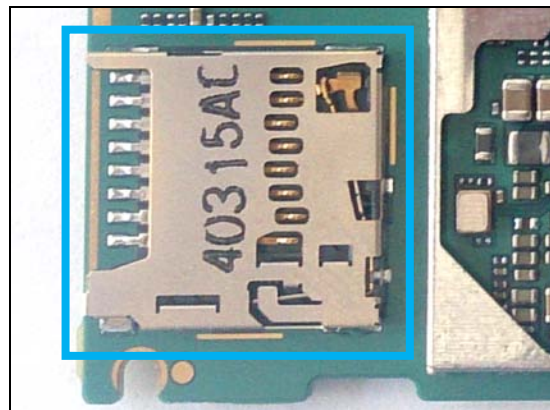


Repair Actions: Additional Repair Info

13

X4100

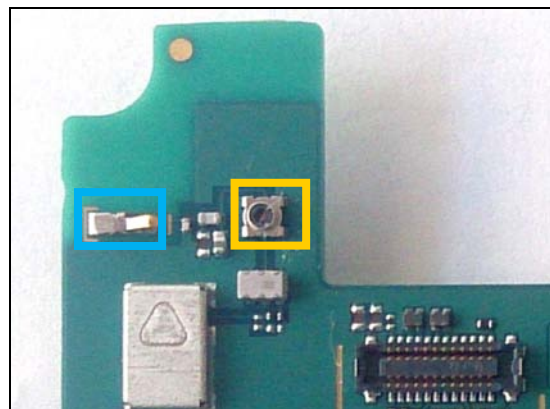
Replace if mechanical damaged (No SD card)



14

X8003

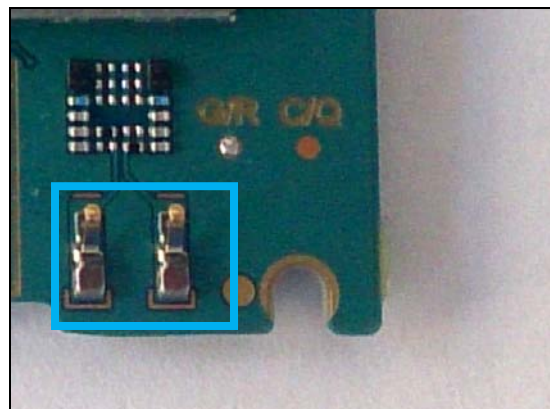
**Replace if mechanical damaged (no or bad WLAN/ BT)
Protect the RF connector with capton tape!**



15

X8600, X8601

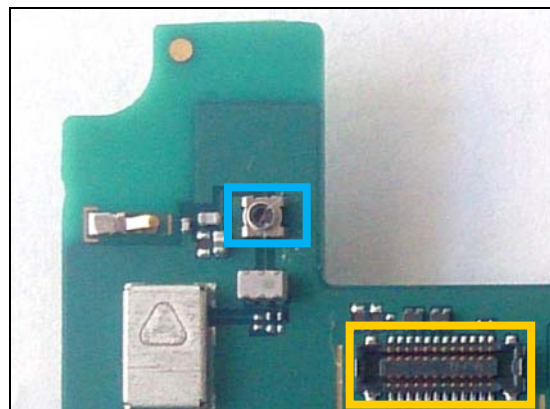
Replace if mechanical damaged (No or bad NFC)



16

X9511

**Replace if open circuit 1-2 (no or bad WLAN/ BT)
Protect the BtB connector with capton tape!**

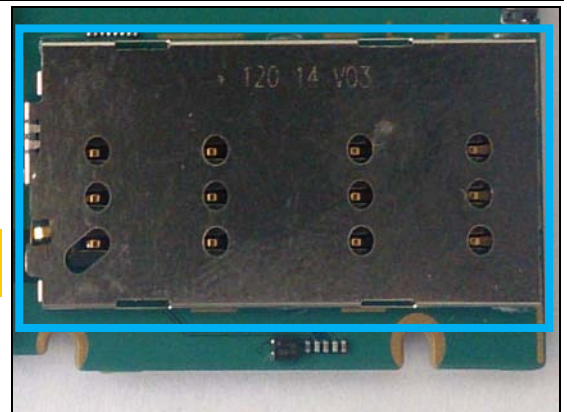


Repair Actions: Additional Repair Info

17

X9512, X9513, X9514

Replace if mechanical damaged (No network, restart, No SIM card inserted)



4 Revision History

Rev.	Date	Changes / Comments
1	2014-08-07	Initial release
2	2014-08-22	Added D2502 and D2533